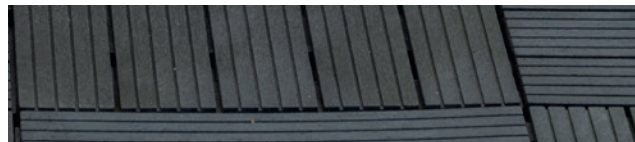
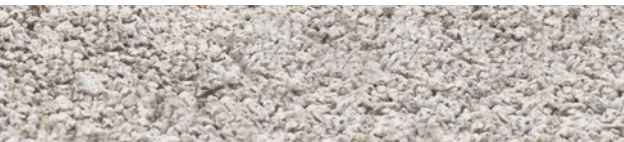




  
multy home™  
europe  
MANUFACTURER

## CATALOG GARDEN & TERRACES

 **INCHEM**  
POLONIA  
DISTRIBUTOR



# ABOUT OUR PRODUCTS

ALL OUR PRODUCTS ARE MADE FROM MATERIALS OBTAINED THROUGH THE RECYCLING OF CAR TIRES.



ENVIRONMENTALLY FRIENDLY



MADE FROM RECYCLED MATERIALS



EASY AND QUICK INSTALLATION



RESISTANT TO HIGH AND LOW TEMPERATURES +50°C TO -50°C



EASY TO CLEAN



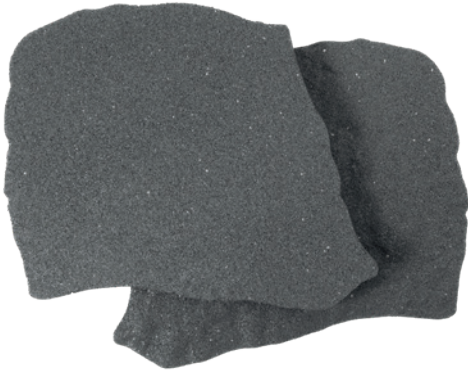
MANUFACTURED BY  
MULTY HOME EUROPE

# GARDEN STONE - NATURAL STONE

Decorative tiles that mimic real stone. Durable and easy to maintain. Ideal for decoration and creating garden paths.

Product	Color	Bulk Packaging
7453 Garden Stone Natural Stone	Gray	None

## EASY INSTALLATION



# GARDEN STONE - STOMP STONE

Durable tiles for decoration and creating garden paths or hardening outdoor surfaces.

Product	Color	Bulk Packaging
5190 Garden Stone Stomp Stone 30 x 30 cm	Graphite	None

## EASY INSTALLATION

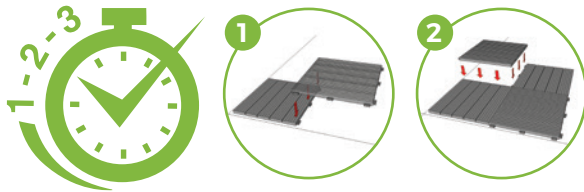


# MOSAIC TERRACE TILE

Durable and weather-resistant tiles for creating outdoor terraces. Easy to install and maintain. Can be used on various surfaces such as concrete, wood, or even compacted gravel.

Product	Color	Bulk packaging
1669 Mosaic Terrace Tile 30 x 30 cm	Steel	6 pcs.
3022 Mosaic Terrace Tile 30 x 30 cm	Graphite	6 pcs.

## EASY INSTALLATION

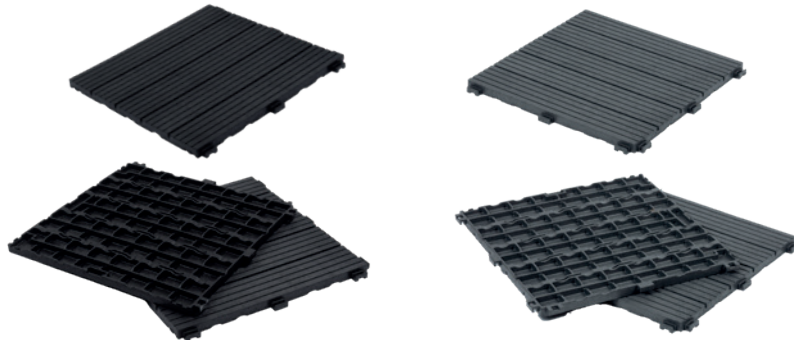
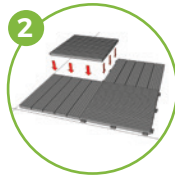
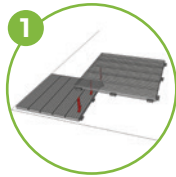


# COSMOPOLITAN TERRACE TILE

Weather-resistant terrace tiles are a great solution for outdoor flooring. Suitable for use on various hardened surfaces (concrete, wood, compacted gravel). Available in several colors and patterns, making them a versatile choice for any outdoor space.

Product	Color	Bulk packaging
1720 Cosmopolitan Terrace Tile 30 x 30 cm	Steel	6 pcs.
5183 Cosmopolitan Terrace Tile 30 x 30 cm	Graphite	6 pcs.

## EASY INSTALLATION

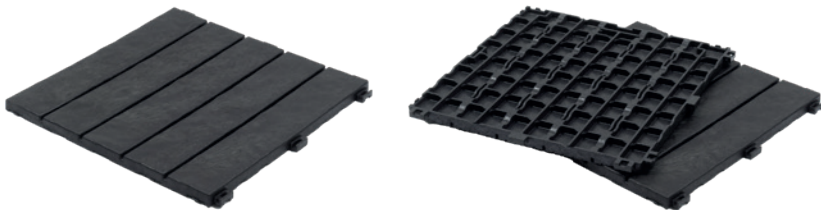


# NATURAL STONE TERRACE TILE

Solid, weather-resistant terrace tiles. Easy to install (tiles interlock) and maintain. Can be used on various surfaces such as concrete, wood, or compacted gravel.

Product	Color	Bulk packaging
7484 Natural Stone Terrace Tile 30 x 30 cm	Graphite	6 pcs.

## EASY INSTALLATION

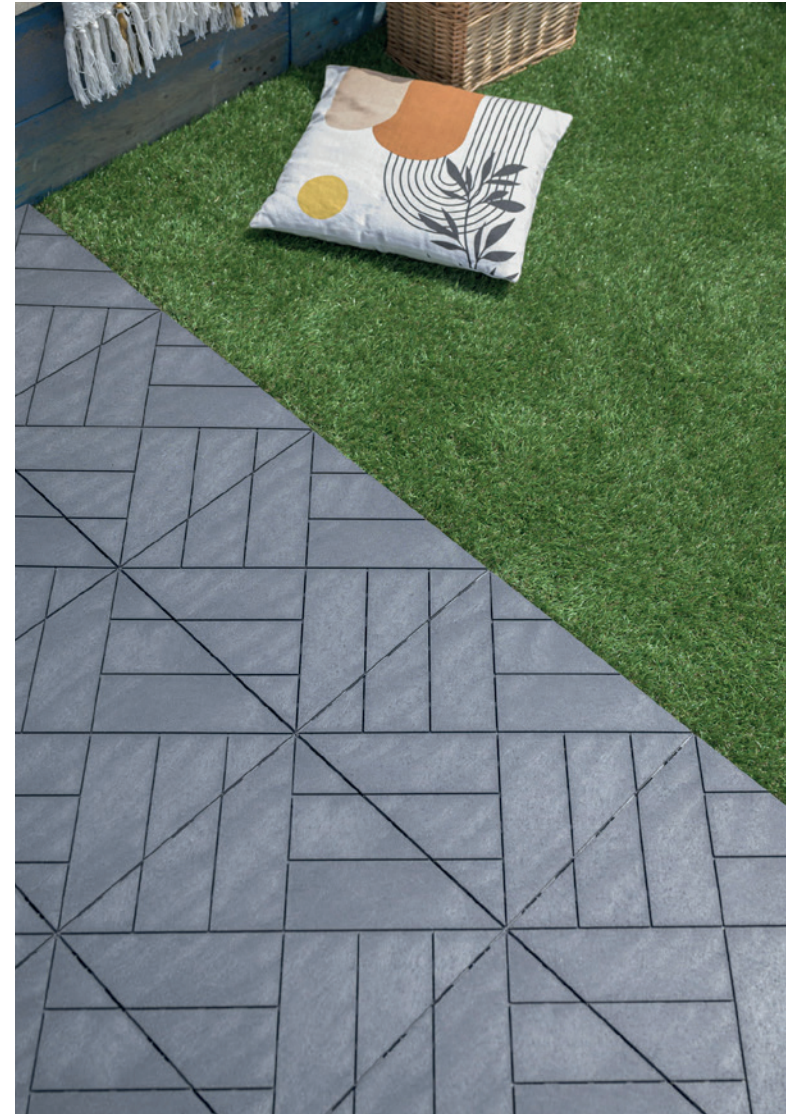
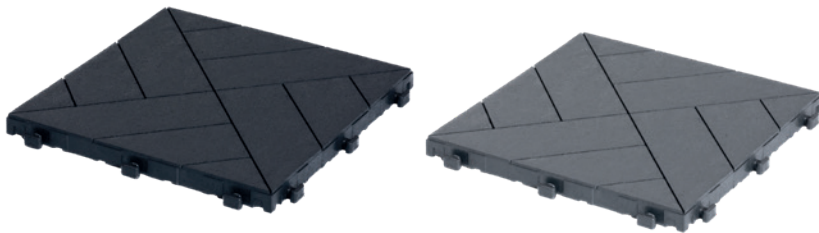
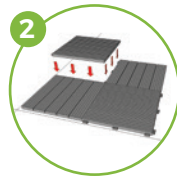
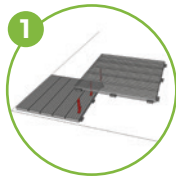


# PARQUET TERRACE TILE

Parquet Artista terrace tiles are a stylish choice for outdoor terraces. Durable and weather-resistant, easy to install and clean, they will be hassle-free to use.

Product	Color	Bulk packaging
8668 Parquet Terrace Tile 30 x 30 cm	Graphite	6 pcs.
8675 Parquet Terrace Tile 30 x 30 cm	Steel	6 pcs.

## EASY INSTALLATION





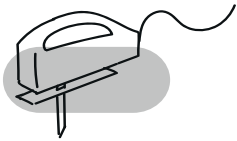
# INSTALLATION INSTRUCTIONS FOR TERRACE TILES: COSMOPOLITAN, MOSAIC, NATURAL STONE



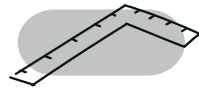
## Easy and quick installation

- Before starting the installation, carefully read the instructions.
- No specialized tools are required.
- Tiles can be installed on existing substrates that are solid, smooth, dry, level, securely fixed, and clean.

## Necessary Tools



Utility knife with a heavy-duty blade



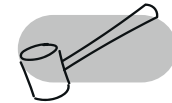
Straight edge



Pencil or chalk marker

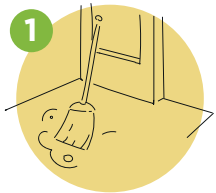


Measuring tape

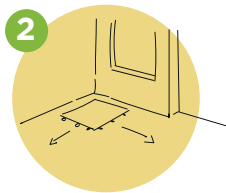


Rubber mallet (optional)

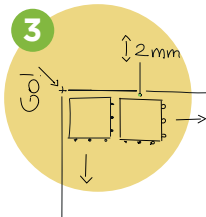
## Installation



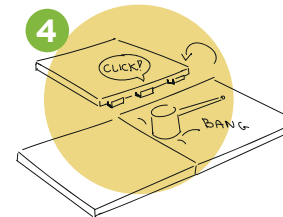
1 Ensure the floor surface is smooth, level, dry, clean, and free of grease and oils. Check for cracks, gaps, nails, or other damage. Patch or fill any large holes.



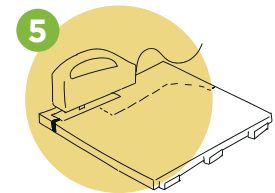
2 Start the installation in the corner of the area to be covered. Place the first tile, ensuring the „smooth“ edges face left and up, and the tabs face right and down.



3 Remember to leave about 2 mm of free space around each tile when laying them near walls and other objects.



4 Continue laying tiles until the desired area is covered.



5 When reaching walls and obstacles, you will likely need to cut the tiles to fit. Measure the distance between the last tile and the wall, and cut the excess width of the tile.

# ROMAN STONE EDGING

Flexible and super durable garden edging. Easy to shape, adapts to straight or curved areas. Durable in all weather conditions. Very easy to install thanks to spikes for driving into the ground.

Product	Color	Bulk packaging
7477 Roman Stone Edging 120 x 7 x 8 cm	Gray	None



**EASY INSTALLATION**



## MOWING EDGE EDGING

Easy-to-shape garden edging, used for conveniently limiting mowing areas (lawns). Resistant in all weather conditions. Easy to install thanks to spikes for driving into the ground.

Product	Color	Bulk packaging
1812 Mowing Edge Edging 120 x 7 x 8 cm	Gray	None



**EASY INSTALLATION**





Inchem Polonia Sp. z o.o.  
ul. Bartnicza 18, 92-612 Łódź  
NIP: 728 273 94 05

+48 42 213 23 00  
e-mail: [biuro@inchem.pl](mailto:biuro@inchem.pl)  
[www.inchem.pl](http://www.inchem.pl)

